

Investible Project Details

Projects under Public Private Partnership (PPP)

RFP for Re-Development, Operation and Maintenance of Orchid Hotel, located at Shillong City under Design, Build, Finance, Operate and Transfer (DBFOT) Mode on Public Private Partnership (PPP)

RFP link: [Extension of date for publishing of tender documents \(meghalayatourism.in\)](https://meghalayatourism.in)

Project Name:	5-Star Hospitality Unit- Polo Orchid	Department:	Tourism Department, Govt. of Meghalaya
Area (acre):	2	Land Type:	Government Owned
Project Cost (INR in Crore):	80-125	Investment Model:	Public Private Partnership
Nodal Person Name:	Cyril V. Darlong Diengdoh, IAS	Contact Number:	0364-2210132
Email ID:	cyril.diengdoh@gov.in		

Brief About the project:

Situated at the epicenter of Shillong city, the site provides a prime location with key attractions like Police Bazaar, JN Stadium, Wards Lake, the Secretariat, etc. all within walking distance. This presents a distinct opportunity for establishing a commercial setup or hotel for budget travelers.

How to apply/ Process to Connect:

The private sector may reach out to the contact details provided above. The process for undertaking the project is as follows:

- The Government is inviting bids from Private sector for undertaking this project on PPP mode.

Project Location Map: 25.581003°N, 91.888388°E

Location Map:

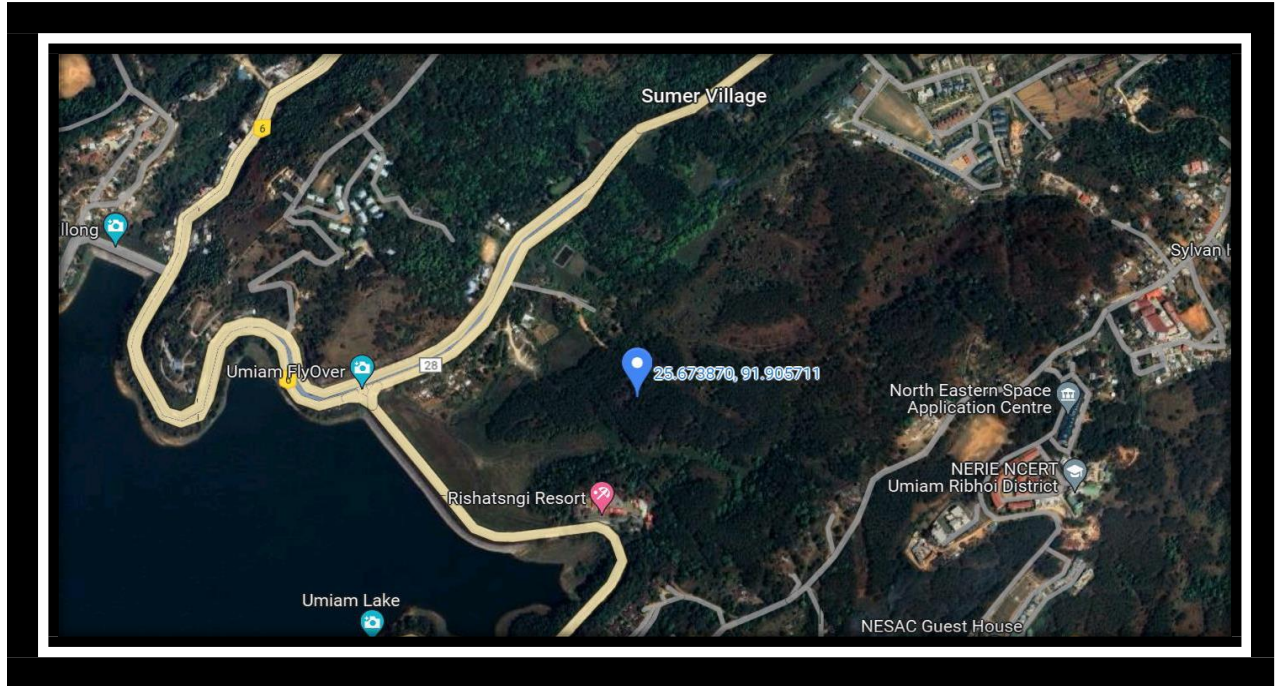


Development, Operation and Maintenance of Luxury Tented Accommodation located at Multiple Locations in Meghalaya under Design, Build, Finance, Operate and Transfer (DBFOT) Mode on Public Private Partnership

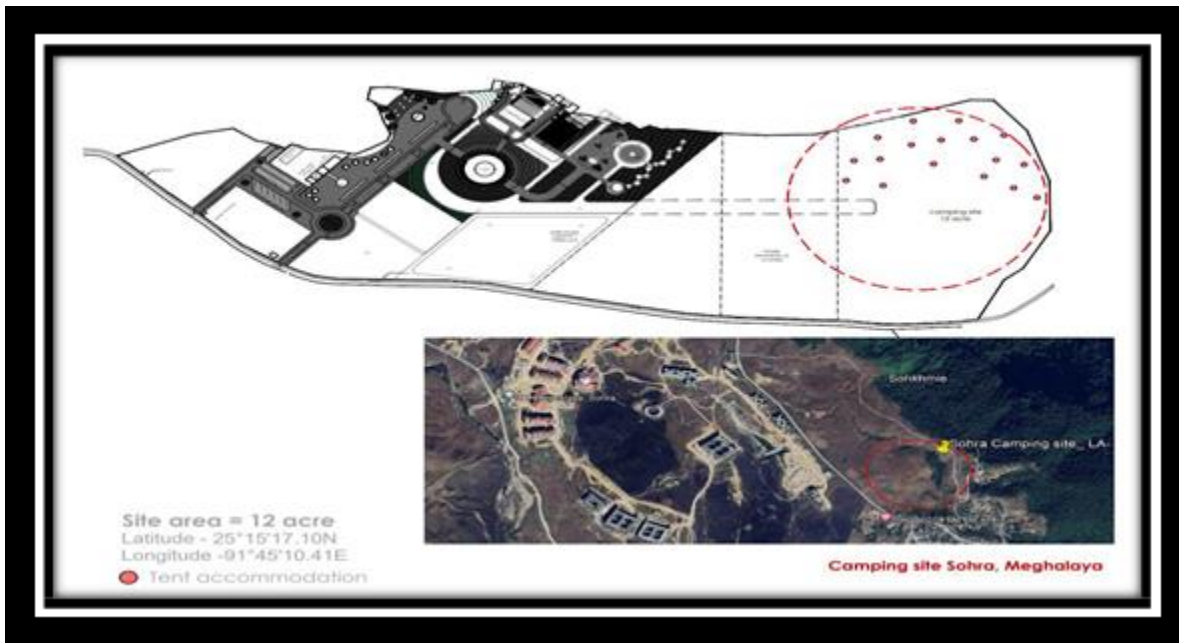
RFP Link: [Extension of date for publishing of tender documents \(meghalayatourism.in\)](https://meghalayatourism.in)

Sl. No	Project Location	Land Extent (Acre)	Minimum Proposed Tents	Land Ownership	Land Co-ordinates (Longitude and Latitude)
1.	Umiam Lake	15 Ac	100 Nos	Director of Tourism, Meghalaya	Latitude: 25°40'26" N Longitude: 91°54'17" E Latitude: 25°40'33" N Longitude: 91°54'27" N
2.	Sohra, Cherrapunjee	10 Ac	50 Nos	Director of Tourism, Meghalaya	Longitude- 91°45'10.41E Longitude- 91°45'10.41E
3.	Nongmahir Hill	10 Ac	50 Nos	Director of Tourism, Meghalaya	Latitude - 25°46'30"N Longitude - 91°47'8"E
4.	Nokrek	10 Ac	50 Nos	Director of Tourism, Meghalaya	Latitude- 25°31'19.57N Longitude- 90°20'51.53E
5.	Umkrem	10 Ac	50 Nos	Director of Tourism, Meghalaya	Latitude - 25° 29' 20.9"N Longitude-91° 28' 04.7"E Latitude - 25° 29' 19.0"N Longitude - 91° 28' 04.7"E Latitude - 25° 29' 26.4"N Longitude - 91° 28'11.6"E Latitude- 25° 29' 24.0"N Longitude - 91° 28' 04.4"E
6.	Jaintia Hill - Nartiang	5 Ac	25 Nos	Director of Tourism, Meghalaya	Latitude is 25° 32' 44.87" N. Longitude is 92° 9' 52.68" E.

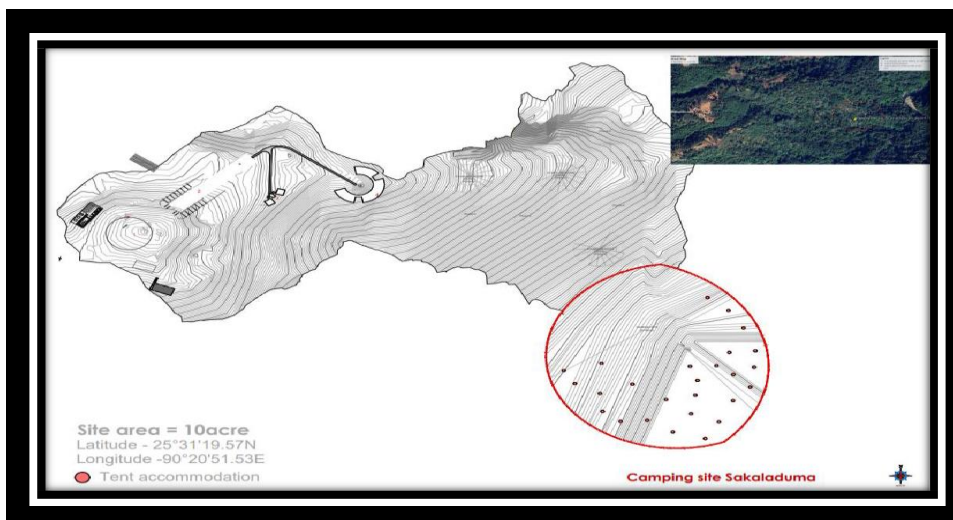
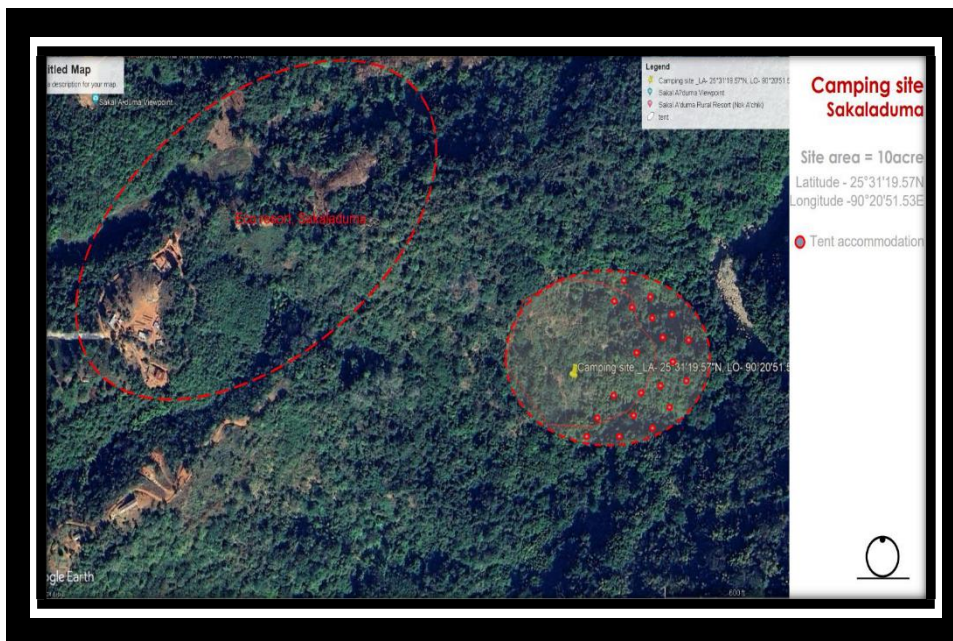
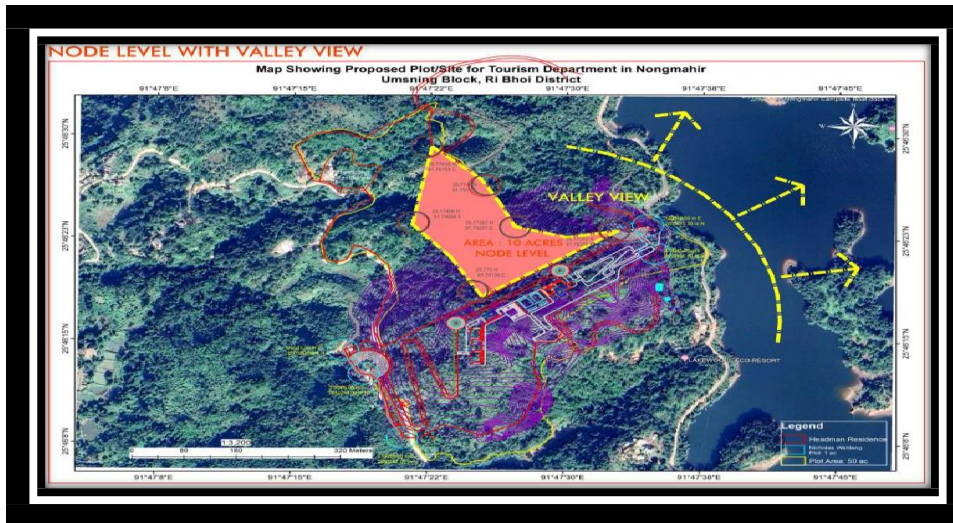
Project Location: Umiam Lake



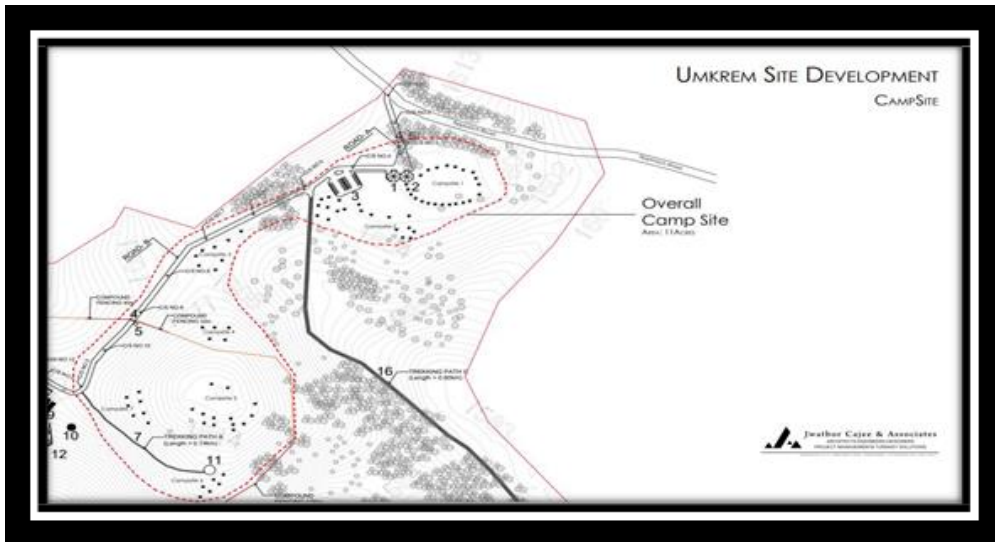
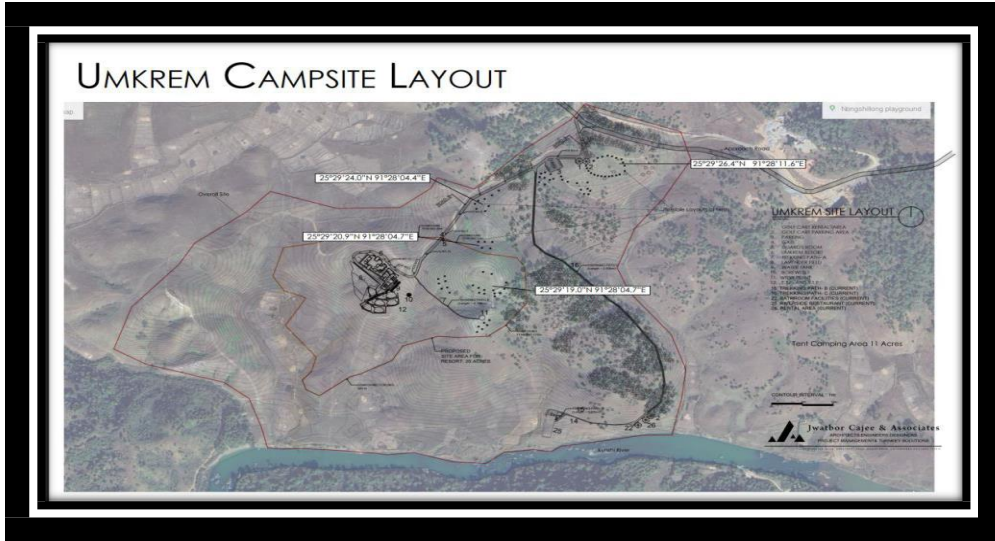
Project Location: Sohra, Cherrapunjee



Project Location: Nongmahir Hill



Project Location: Umkrem



Project Location: Jaintia Hill - Nartiang



Other Investible Projects:

Project Name:	Resort / Hospitality Complex- New Shillong Township	Department:	Tourism Department, Govt. of Meghalaya
Area (acre):	10-12	Land Type:	Government Owned
Project Cost (INR in Crore):	180-200	Investment Model:	Public Private Partnership
Nodal Person Name:	Cyril V. Darlong Diengdoh, IAS	Contact Number:	0364-2210132
Email ID:	cyril.diengdoh@gov.in		

Brief about the project:

The Government of Meghalaya is planning to develop a New Administrative Township in Mawdiangdiang. As per the master plan, land parcel of 12 acres has been earmarked for development of a 5-star hotel. The land is close to the proposed Unity Mall and New Secretariat and Directorates, projects that are being developed by the Government of Meghalaya with support from Central Government.

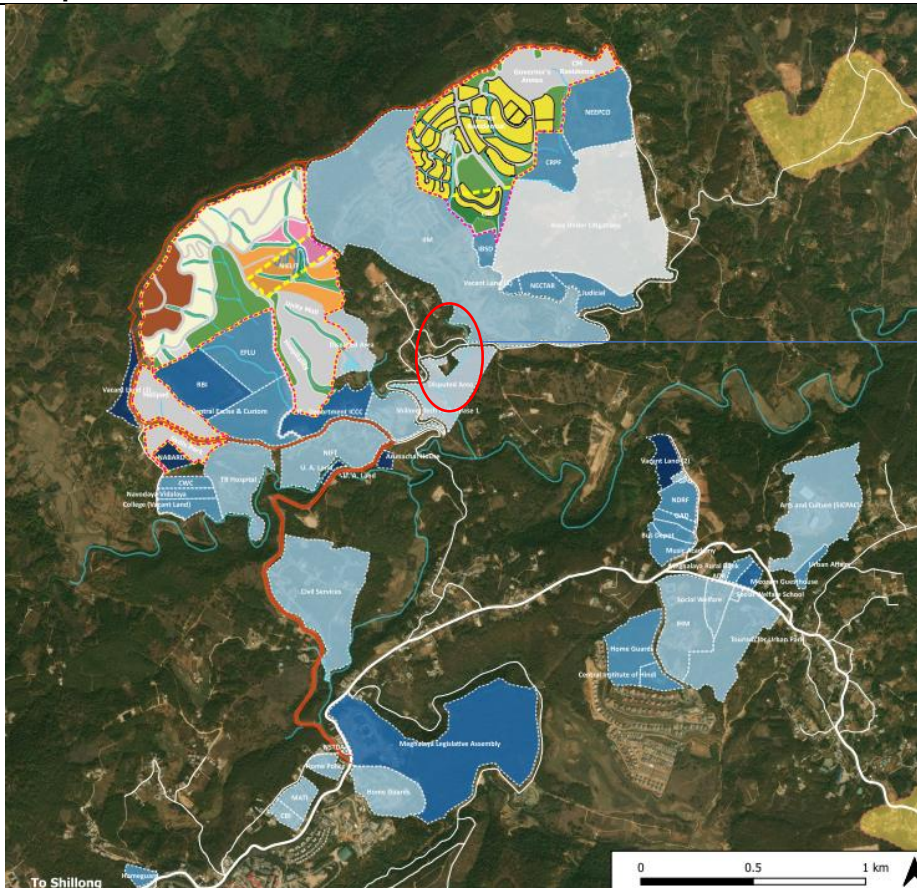
How to apply/ Process to Connect:

The private sector may reach out to the contact details provided above. The process for undertaking the project is as follows:

- Undertake technical and financial feasibility assessment for the project and submit the same to Directorate of Tourism.
- The Directorate will scrutinize the project concept and feasibility for the same.
- The Directorate will initiate a transparent transaction advisory process and will invite private parties to apply for the project on PPP Mode.

Project Location: 25.616145°N, 91.954842°E

Location Map:



Area earmarked for hospitality projects.

Project Name:	7-Star Hospitality Complex-Sohra	Department:	Tourism Department, Govt. of Meghalaya
Area (acre):	50	Land Type:	Government Owned
Project Cost (INR in Crore):	250-300	Investment Model:	Public Private Partnership
Nodal Person Name:	Cyril V. Darlong Diengdoh, IAS	Contact Number:	0364-2210132
Email ID:	cyril.diengdoh@gov.in		

Brief about the project:

Sohra (Cherrapunji) is the most popular tourist destination besides Shillong with major tourist sites such as No Ka Likai falls, Noh Sngithiang Falls, Mawsmi Cave, Arwah Caves, etc. With a significant footfall of over 12,000 tourists per month, there arises a need for a luxury hospitality complex to cater to the growing demand.

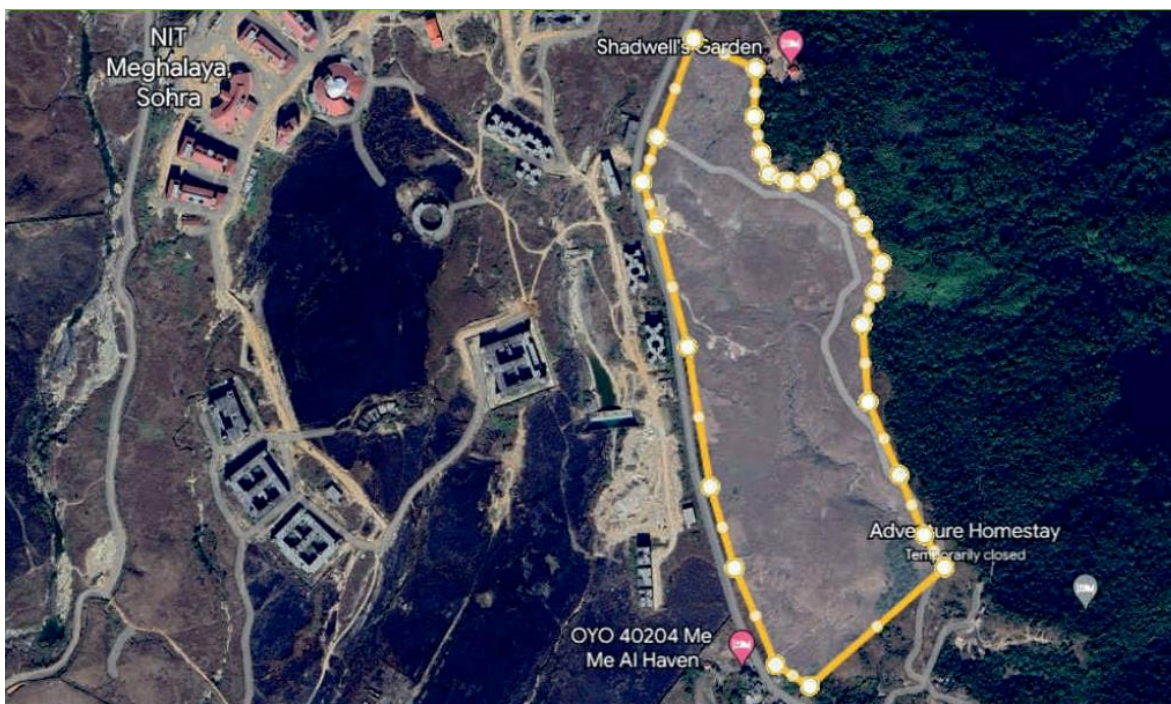
How to apply/ Process to Connect:

The private sector may reach out to the contact details provided above. The process for undertaking the project is as follows:

- a. Undertake technical and financial feasibility assessment for the project and submit the same to Directorate of Tourism.
- b. The Directorate will scrutinize the project concept and feasibility for the same.
- c. The Directorate will initiate a transparent transaction advisory process and will invite private parties to apply for the project on PPP Mode.

Project Location: 25.259985’N, 91.747807’E

Location Map:



Project Name:	5-Star Resort at Orchid Lake, Umiam	Department:	Tourism Department, Govt. of Meghalaya
Area (acre):	28	Land Type:	Government Owned
Project Cost (INR in Crore):	200 - 250	Investment Model:	Public Private Partnership
Nodal Person Name:	Cyril V. Darlong Diengdoh, IAS	Contact Number:	0364-2210132
Email ID:	cyril.diengdoh@gov.in		

Brief About the project:

A land parcel admeasuring ~28 acres, nearby Umiam lake, presents an ideal location for a luxury hotel, providing guests with a scenic view and a perfect wedding destination. The area has existing government-owned hotels, a water sports complex, and more.

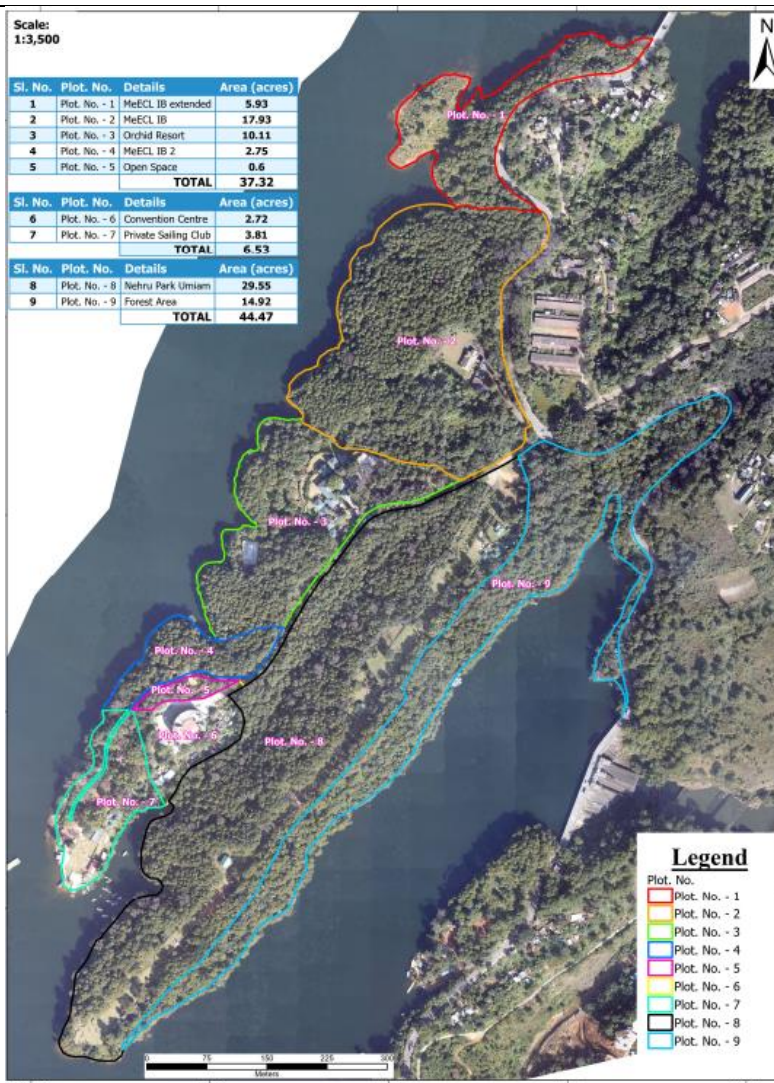
How to apply/ Process to Connect:

The private sector may reach out to the contact details provided above. The process for undertaking the project is as follows:

- Undertake technical and financial feasibility assessment for the project and submit the same to Directorate of Tourism.
- The Directorate will scrutinize the project concept and feasibility for the same.
- The Directorate will initiate a transparent transaction advisory process and will invite private parties to apply for the project on PPP Mode.

Project Location: 25.66152’N, 91.898346’E

Location Map: Plot 2 & 3



Project Name:	Hospitality Complex- Khanapara	Department:	Tourism Department, Govt. of Meghalaya
Area (acre):	7	Land Type:	Government Owned
Project Cost (INR in Crore):	75-100	Investment Model:	Public Private Partnership
Nodal Person Name:	Cyril V. Darlong Diengdoh, IAS	Contact Number:	0364-2210132
Email ID:	cyril.diengdoh@gov.in		

Brief About the project:

Located on the Assam-Meghalaya border and few minutes from Guwahati Railway Station, Khanapara serves as a bustling junction with huge potential for establishing a hotel catering to tourists exploring both Assam and Meghalaya. Situated adjacent to Guwahati City and the Assam Secretariat, the area is surrounded by major hotels, institutes and commercial buildings.

How to apply/ Process to Connect:

The private sector may reach out to the contact details provided above. The process for undertaking the project is as follows:

- Undertake technical and financial feasibility assessment for the project and submit the same to Directorate of Tourism.
- The Directorate will scrutinize the project concept and feasibility for the same.
- The Directorate will initiate a transparent transaction advisory process and will invite private parties to apply for the project on PPP Mode.

Project Location Map: 26.650315’N, 91.4929751’E

Location Map:



Project Name:	Hospitality Complex, Shillong Peak	Department:	Tourism Department, Govt. of Meghalaya
Area (acre):	2.5	Land Type:	Government Leased Land
Project Cost (INR in Crore):	75	Investment Model:	Public Private Partnership
Nodal Person Name:	Cyril V. Darlong Diengdoh, IAS	Contact Number:	0364-2210132
Email ID:	cyril.diengdoh@gov.in		

Brief About the project:

Sitting at an elevation of 6,446 feet, Shillong Peak stands as Meghalaya's highest peak and a favored destination for tourists. Located at a distance of about 13 kilometers away from Police Bazaar, enhancing amenities at the viewpoint holds great potential. A significant nearby project is the Ropeway Project, valued at Rs. 160 crores, approved by the NDB and currently in progress.

How to apply/ Process to Connect:

The private sector may reach out to the contact details provided above. The process for undertaking the project is as follows:

- Undertake technical and financial feasibility assessment for the project and submit the same to Directorate of Tourism.
- The Directorate will scrutinize the project concept and feasibility for the same.
- The Directorate will initiate a transparent transaction advisory process and will invite private parties to apply for the project on PPP Mode.

Project Location: 25.53168581’N, 91.8512340’E

Location Map:



New Shillong Knowledge City at Mawkhanu

Component - 1	Project Name:	Hill Top Luxury Resort	Department:	Department of Urban Affairs, Govt. of Meghalaya
	Area (acre):	28	Land Type:	Government Owned
	Project Cost (INR in Crore):	~106	Investment Model:	Public Private Partnership
Component - 2	Project Name:	Amusement Park and 3/ 4 Star Hotel	Department:	Department of Urban Affairs, Govt. of Meghalaya
	Area (acre):	44.7	Land Type:	Government Owned
	Project Cost (INR in Crore):	~265	Investment Model:	Public Private Partnership
Component - 3	Project Name:	Golf Facing Luxury Resort	Department:	Department of Urban Affairs, Govt. of Meghalaya
	Area (acre):	196.96	Land Type:	Government Owned
	Project Cost (INR in Crore):	~270	Investment Model:	Public Private Partnership
Component - 4	Project Name:	Convention Centre and Luxury Hotel	Department:	Department of Urban Affairs, Govt. of Meghalaya
	Area (acre):	31	Land Type:	Government Owned
	Project Cost (INR in Crore):	~370	Investment Model:	Public Private Partnership
Nodal Person Name:		Superintending Officer, Urban Dept. K. Wallang	Contact Number:	8974568039
Email ID:		senstda@gmail.com		
Brief about the project:				
<p>The State had acquired ~807 acres of land in Mawkhanu to establish a 'New Shillong Knowledge City'. The location is well connected due to proximity to Shillong Airport (Umroi), which is approximately 20 minutes away by road. The airport is adjacent to the Shillong-Jowai Bypass, which connects the city with other parts of Meghalaya and the North-East. The vision is to build infrastructure to boost the State's key economic drivers with multi-sectoral focus on IT, tourism, agriculture, and knowledge service in sport & culture.</p> <p>With a 18 holes Golf course along with luxury resort, Convention Centre with luxury hotel, standalone hilltop high-end hotel, amusement park with midscale hotel; the State aims to develop the proposed city as an important destination for high value tourism, thereby filling the gap of limited high-value tourist product offerings in the State.</p>				
How to apply/ Process to Connect:				
<p>The private sector may reach out to the contact details provided above. The process for undertaking the projects is as follows:</p> <ol style="list-style-type: none"> Undertake technical and financial feasibility assessment for the projects and submit the same to Directorate of Tourism. The Directorate will scrutinize the project concept and feasibility for the same. The Directorate will initiate transparent transaction advisory process and will invite private parties to apply for the project on PPP Mode. 				

Location Map:

