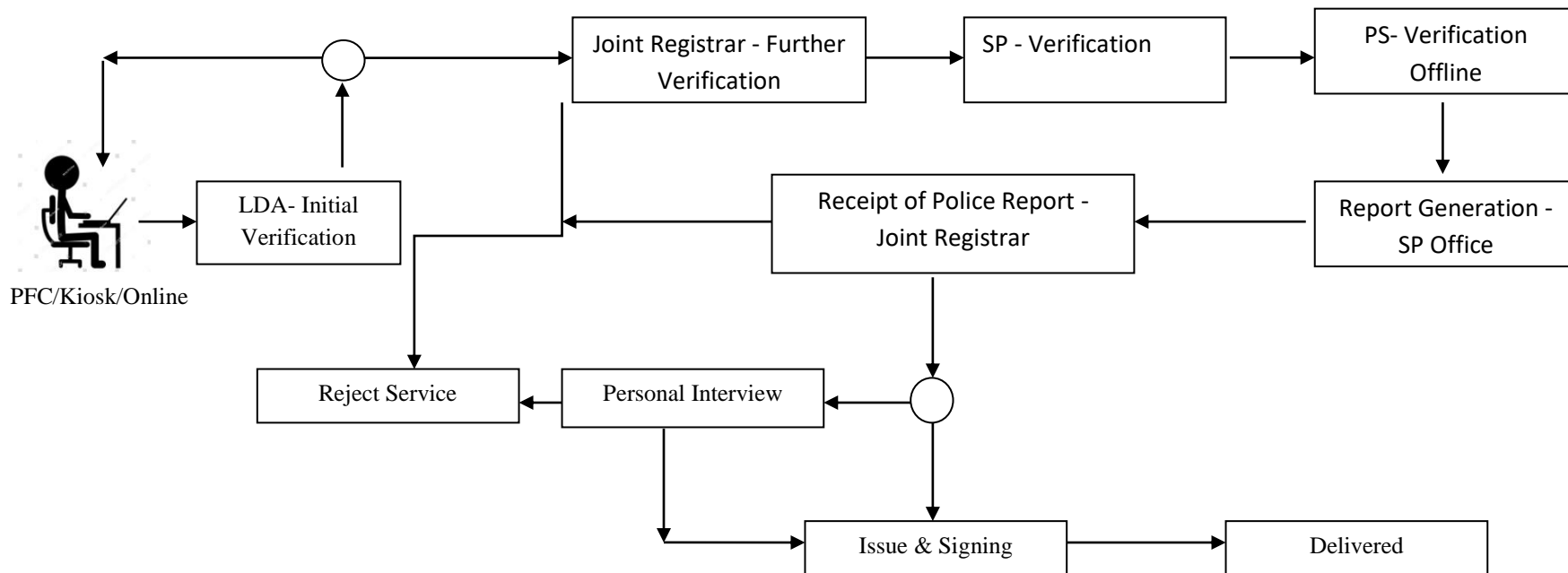
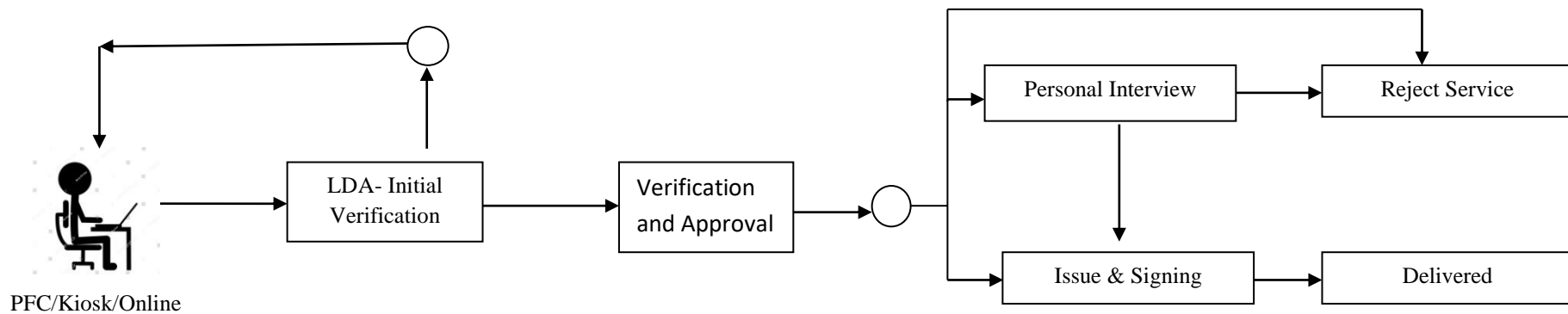


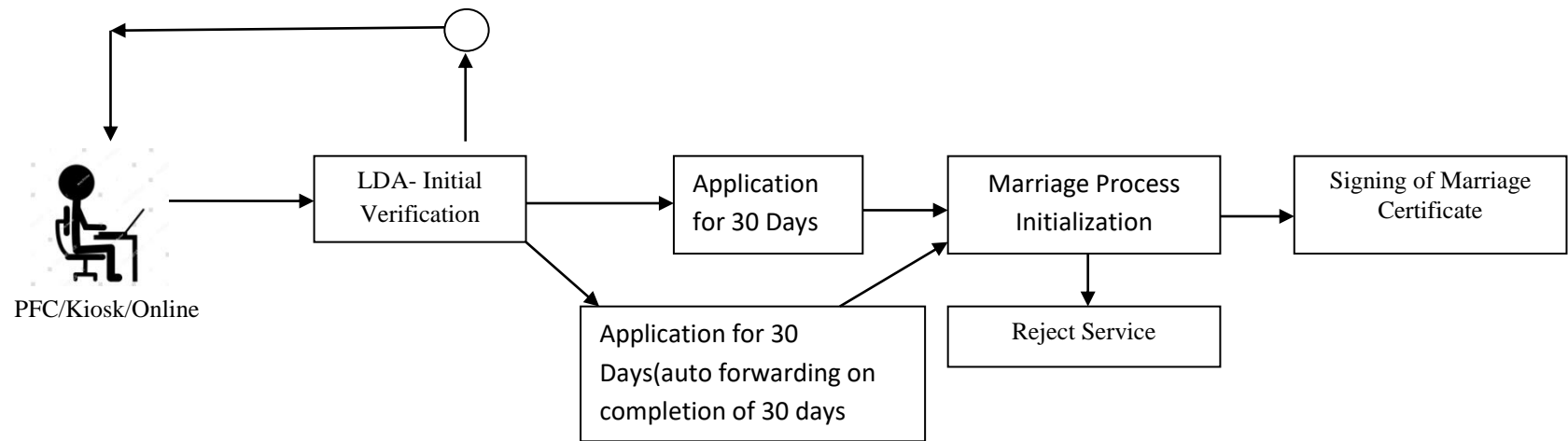
Process flow for Registration of Societies



Senior Citizen Certificate



Marriage Services Process Flow:



In Marriage Service, once application is submitted to the dealing assistant concerned (LDA- Initial Verification), he can forward the application to the task -----

a. Applicant Task – If there needs reupload of enclosures

Or

b. Application of 30 days(assigned to WFP) and Application for 30 days(auto forwarding) –the system will auto forward the application to “Marriage Process Initialization” after completion of 30 days(from the task Application for 30 days(auto forwarding) which is a timer task) and if we want we can forward before 30 days too from the task “Application for 30 days”.

Whether its auto forward or manual forward to the task “Marriage Process Initialization” sms will be triggered from the system, to the applicant so that he may come to office to discuss the date for Marriage and also pay the required fee.